

Postgraduate and Research Prospectus

2025/26

University of
HUDDERSFIELD
Inspiring global professionals

Postgraduate Open Days

Wednesday
20 November
2024

Wednesday
12 March
2025

Wednesday
04 June
2025



Book now





Welcome

“As a former postgraduate student of the University, I am deeply proud of Huddersfield and the excellence of our academic community.

“Huddersfield offers postgraduate students who come to study here a beautiful, modern campus in which we are continually investing.

“As a University, we are dedicated to raising our research profile whilst maintaining our excellence in all aspects of teaching and learning. That’s a formula which makes for a great environment.

“I do hope you will join us, and I look forward to welcoming you to the University of Huddersfield.”



Professor Bob Cryan

CBE DL FEng BSc MBA PhD DSc
Vice-Chancellor

Contents

06

Why Huddersfield?

08

Award-winning teaching

10

Postgraduate pathways

12

Postgraduate taught options

13

Postgraduate research options

14

Distance learning

16

Postgraduate myths

17

Graduate case study

18

What our students say

20

Enhance your career

21

Applied learning

22

Postgraduate support
and wellbeing

24

Applying for a taught degree

26

Postgraduate taught fees
and funding

28

Applying for a research degree

30

Postgraduate research fees
and funding

32

Our research centres
and institutes

34

Our research students

36

The Graduate School

37

Research support

38

Postgraduate research
academics

40

Our campus

42

Explore Huddersfield

44

Accommodation

46

Postgraduate taught courses

54

Research areas of expertise

62

Research degrees

64

Master's courses
with placements

66

Get in touch







Why Huddersfield?



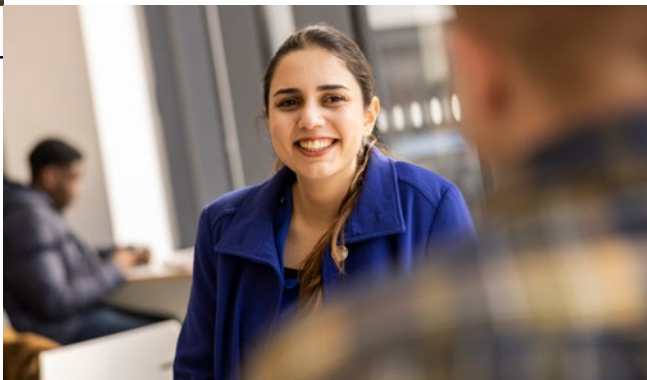
£157m

invested in exciting new buildings,
top class facilities and support services.

£36.1k

is the average salary of our postgraduate
students fifteen months after graduating.

(HESA Graduate Outcomes 2021/22, UK domiciled,
full-time UK employment)



TOP
3

Our staff rank in the top
three in England for the
proportion who hold
doctorates, have higher
degrees, and hold teaching
qualifications.

(HESA 2022/23 Staff Statistics)

TOP
IN THE
UK

The University of Huddersfield
placed top in the UK in the
global Young University
Rankings.

(Times Higher Education Young
Universities Rankings 2024)



6,300

Vibrant postgraduate community of over 6,300 taught students and researchers, from over 100 different nationalities.

(HESA 2021/22)



97%

of our postgraduate students go on to work and/or further study within fifteen months of graduating.

(HESA Graduate Outcomes 2021/22, UK domiciled, other activities excluded)

World Leading

We are in the top 50 UK universities for Research Power, and three quarters of all our research is world leading and internationally excellent.

(REF2021)



10%

alumni discount* on postgraduate taught Master's courses.

*The 10% alumni discount applies to graduates of the University of Huddersfield who have previously completed a 3-4 year undergraduate Honours level degree at the University, and applies to Home students only.



Award-winning teaching

Here at Huddersfield, we're recognised as a centre of teaching excellence. Here are just some of the reasons why:

96%

We're first among all universities in England for the percentage of academic staff with a Master's degree or above, with 96%.

(HESA 2022/23 Staff Statistics)



All our permanent teaching staff* have, or are completing, doctorates. This expertise, together with our teaching credentials, means that you will learn from academics at the forefront of their subject area.



In 2017, we won the first annual Global Teaching Excellence Award, recognising our commitment to world-class teaching and success in developing students as independent learners and critical thinkers.



We were the first and are the only university in the UK where 100% of permanent teaching staff*** are Fellows of the Higher Education Academy.



We are joint first in the country for National Teaching Fellowships, which mark the UK's best lecturers in Higher Education, winning a total of 23 since 2008.

(2024 data)



Our staff rank in the top three in England for the proportion who hold doctorates, have higher degrees, and hold teaching qualifications.

(HESA 2023)

*Permanent staff, after probation: some recently appointed colleagues will only obtain recognition in the months after their arrival in Huddersfield, once they have started teaching; research degrees applies to those on contracts of more than half-time.

**Permanent staff, after probation: some recently appointed colleagues will only obtain recognition in the months after their arrival at Huddersfield, once they have started teaching.



“The staff are supportive and always keen to help you. They are dedicated to research and use this knowledge to support students.

“The technicians have often worked in industry or studied at postgraduate level themselves. Together, the staff and technicians really encourage and support your thinking and creativity.

“They also take an interest in getting to know you personally – you aren’t just seen as a number. After completing my Master’s, I decided to continue to study at the University of Huddersfield for a PhD, because I could thrive in the super friendly and supportive environment.”

Charlotte Dobson

PhD in Art and Design, Photography



Postgraduate pathways

Here at Huddersfield you can choose from a range of postgraduate options, including taught or research degrees. To help with your decision, here are some key differences between the two pathways:

1

Postgraduate taught

may be better for you if:

- You prefer more structured study which is assessed through regular assignments and exams.
- You prefer teaching delivered through lectures, seminars and independent study.
- You need a Master's qualification for a specific industry or career.
- You want a mix of coursework, exams and a shorter dissertation.

2

Postgraduate research

may be better for you if:

- You prefer a more independent approach to study, with little or no taught elements and exams, concentrating on a thesis or research portfolio of practical work.
- You would like to project manage your research throughout your whole degree.
- You want to explore a research topic using an in-depth and intensive approach and make an original contribution to knowledge.

[Find out more](#)

Did you know...

Some of our PhDs do not require you to study a Master's degree first.



Check out our course requirements to see if this applies to the course you're interested in.



Postgraduate taught options

A Master's can be flexible to fit around your life. Depending on the course, we offer full-time, part-time and distance learning options to suit you. These include:

Master's degrees

Postgraduate Certificates

Postgraduate Diplomas



Postgraduate research options

Which research degree is right for you?
Here's an introduction to our different options, with more details available online:

Master of Arts and Master of Science by Research

Master of Enterprise

PhD

Doctor of Business Administration (DBA)

Doctor of Public Administration (DPA)

Doctor of Education (EdD)

Doctor of Enterprise (EntD)

Research degrees can be studied on-campus or online via our distance learning route.



Discover more
about the different
types of study



Distance learning

At the University of Huddersfield, we seek to make studying at postgraduate level as flexible and convenient as possible for you.

Our distance learning courses empower you to take full control of your studies, by allowing you to carry out your learning 100% online and work at the times that suit you best.

Whether you're looking to advance in your current career or want to change careers altogether, we will equip you with the skills, knowledge and experience you'll need to thrive.

Designed for online

Our distance learning courses are designed specifically for online delivery, informed by the latest teaching pedagogy. Your course will be engaging, interactive and be applicable to your current profession or interest.

We are committed to creating accessible and inclusive online teaching materials and provide training and guidance on assistive technology and software to students and staff.

Teaching excellence

All courses are delivered by academics from the University, meaning you'll benefit from the same high standards in teaching excellence as our on-campus students, and graduate with a highly sought-after career-boosting qualification.

Alumni discount

Our Alumni Discount is a 10% reduction on annual tuition fees for taught Master's degrees. It is available to distance learning students who studied their undergraduate honours degree at Huddersfield.

[Find out more about Alumni discount](#)



Find out more about distance learning

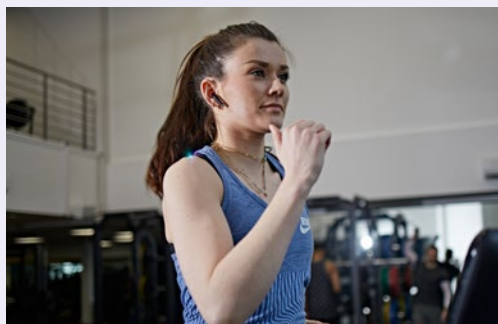
"I really enjoyed the flexibility of distance learning. I had the freedom to adapt my routine to include enough time to study my online classes after or alongside my daily commitments."

Fuzhan Rahmanian

Artificial Intelligence MSc
(Distance Learning),
Chancellor's Prize winner.

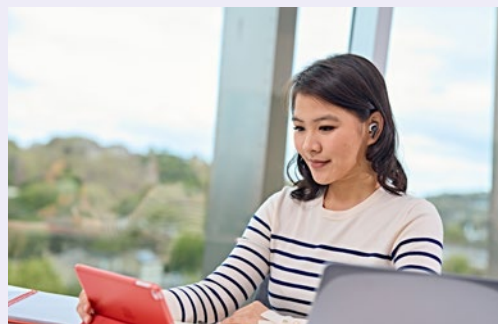


Benefits of distance learning



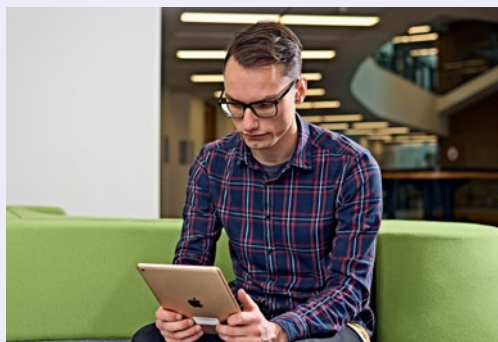
Flexibility

Study at the times and places that are most convenient for you and your lifestyle.



Convenience

Access all your learning materials and university resources in one place, through our industry-leading Virtual Learning Environment, Brightspace.



Accessibility

Access teaching and learning material online, that is accessible for all, across a range of devices.



Cost

Make your money go further by saving on additional costs, such as commuting and accommodation.

Our distance learning courses

Our online course offering is continually growing and includes full and part-time Master's degrees and short CPD (Continuing Professional Development) courses. Many courses carry professional accreditations too.

Get in touch with our enquiry team to find out more



View all of our
distance learning
courses



Postgraduate myths

When considering postgraduate study there are lots of things to think about. We've shared below some of the most common myths (and the truth) to help you with your decision.

"A postgraduate degree won't improve my career prospects."

£36.1k

is the average salary of our postgraduate students fifteen months after graduating.*

97%

of our postgraduate students go on to work and/or further study within fifteen months of graduating.**

"I can't afford to study a postgraduate course."



We offer a 10% discount on postgraduate taught fees for Huddersfield alumni.***
See our website for the latest information.



You could also receive:

- Master's and Doctoral loans
- Vice-Chancellor's Scholarship
 - Research scholarships
 - International scholarships

"Only people with a first class degree can do a postgraduate degree."

2:2

Our entry requirements start from a 2:2 or higher.

"I haven't been to university before, so won't be able to study a Master's."

Many of our courses take prior work experience into consideration.



Ready to find out more?

* HESA Graduate Outcomes 2021/22, UK domiciled, full-time UK employment.

** HESA Graduate Outcomes 2021/22, UK domiciled, other activities excluded.

*** The 10% alumni discount applies to graduates of the University of Huddersfield who have previously completed a 3-4 year undergraduate Honours level degree at the University. The discount only applies to Home students and for taught Master's programmes at the University.

Graduate case study

Our graduates go on to do great things. A postgraduate degree can help you with your future. Hear from graduate Zoe on how studying at postgraduate level benefitted her career:

“The University of Huddersfield has played a significant role in my life and I credit the education I received as a direct influence on the career opportunities I’ve had.

“Achieving a professional qualification in Huddersfield Business School has enabled me to pursue different roles with the confidence that I have the training and knowledge to be an asset.

“I would encourage anyone thinking of applying to the University of Huddersfield to have a look around. The buildings and infrastructure are so impressive, and the quality of teaching and learning are second to none.”

Zoe Shackleton

Human Resources Manager
Huddersfield Town Football Club (HTFC)

“I will always be grateful for having the opportunity to study at this fantastic university, and my own life chances have been immeasurably enhanced as a result.”





What our students say

Our students have first hand experience of what our University is like. Find out what they've loved about their experience at Huddersfield.

“Every conversation you have will aid your development, not only with learning and studies, but as an individual.”

Hadil Haram

Digital Marketing MSc

“The University has excellent staff who dedicate their time and effort to making sure they are delivering the best teaching possible. The facilities are also amazing, and the support continues after you graduate too.

“Every conversation you have will aid your development, not only with learning and studies, but as an individual. I have seen myself changing a lot, I am becoming more professional, confident and focused.”





“I fell in love with psychology during my three years studying it at undergraduate level, so opting to do a postgraduate Master’s course seemed the natural next step.”

Tom Williams

Investigative Psychology PhD
(previously studied Psychology BSc(Hons) and Investigative Psychology MSc)

“I never considered doing a postgraduate degree at another university, mostly due to the incredible staff and lecturers who not only helped me with my Master’s application but who have also been there with me all the way through my studies, even now while I’m doing my PhD.

“The patience and support they have given me has helped in all aspects of my educational and career prospects. These things, as well as the lifelong friends and happy memories I’ve gained here over the years, have never once made me question staying here for the entirety of my university journey.”



Enhance your career

A postgraduate qualification is a great way to improve your professional prospects, change your career path, or master your passion.

A postgraduate qualification will allow you to stand out from the crowd with specialist knowledge, expertise and skills, or even allow you to change career direction entirely.

Whatever your reasons, studying at Huddersfield means that you'll have access to great employment support – not just whilst you're here, but throughout your working life.

Careers and Employability Service

Our online careers resources give you access to tools to support you with every aspect of your career development, from exploring opportunities to navigating recruitment processes.

There's also one-to-one guidance to help you work out your career options, as well as employer events, careers fairs, and online and face-to-face workshops. Plus, we offer careers advice for life so you can access support throughout your career.

The Enterprise Team

If you're considering self-employment, freelance work, or starting your own business, The Enterprise Team is here to give you a head start. Based in the Enterprise Hub, the Team offers free support to help get your business off the ground, including one-to-one business advice, workshops, office and meeting space, and networking opportunities. The Team offers enterprise advice for life, which means that you can access all of this support as a graduate too.





Our NESTLED lab simulates a real-life healthcare environment for students.

Applied learning

Our job at Huddersfield is to prepare you for life after university, helping you to gain the knowledge and skills you need to thrive, but also to apply your learning to the real world.

We place a great deal of importance on guiding graduates to acquire the skills needed to excel in their future careers. That's why real-world experience is a key part of our courses at Huddersfield.

The emphasis we place on ensuring our students are prepared for the world of work means that you'll leave university with more than just your degree - you'll gain skills to get you noticed by employers.

Our courses are designed to prepare students for highly skilled employment, creative problem solving and dealing with complexity.

That's certainly the case for our Nurse Educator Simulation-Based Learning Framework (NESTLED) lab, which simulates a real-life healthcare environment to help healthcare students achieve their maximum potential.



Postgraduate support and wellbeing

We offer a range of specialist support, from wellbeing to academic, to ensure you get the most from your studies.



The Library

Open seven days a week during term-time, our library contains 1,200 study places, nearly 500 computers, and a huge number of books and journal articles for you to make use of, with over 300,000 in print form and over a million in digital format.

With a dedicated Postgraduate Study Room, it's the perfect place to go to get some headspace.

Academic support

Academic Support Tutors provide specialist support to help build confidence in research strategies, academic writing, reading, assessment and time management.



Your Students' Union

Offering a wide range of social events, as well as being home to a massive range of clubs, societies and volunteering opportunities, the Students' Union is led by students for students, and is fully independent from the University. They're here to help you feel part of the Huddersfield community. You can follow your passion for sport, join a student society or even get involved with running the Students' Union itself. **[Find out more](#)**

Heritage Quay

Heritage Quay is the University of Huddersfield's archive service. It has close to 200 collections and acts as the official archive of the University and collects archives of other organisations, families, and individuals. The collection's strengths are in Art & Design, Education, Literature, Music, Politics, Sport, and Theatre & Performance. It has a rolling programme of exhibitions featuring highlights from the collections.

To find out more about Heritage Quay's exhibitions, opening hours or to search the collections visit **heritagequay.org**



Wellbeing support

Our Wellbeing Service is here if you ever have any worries or just need a chat.

We offer one-to-one advisor appointments, support relating to mental health, counselling, workshops, support groups and much more.

We're here to ensure you enjoy your time at university by providing you with the support you need in a welcoming and friendly environment.

Disability support

We provide confidential advice, guidance and support where you need it. If you have an ongoing disability or condition that is likely to impact on your studies, please get in touch and register with us so that we can discuss the assistance and adjustments you need:

[hud.ac/registerwithus](https://hud.ac.uk/registerwithus)



LGBTQ+

The vibrant colours of the LGBTQ+ movement, proudly displayed at the entrance of the University, send out a permanent message of inclusivity and tolerance – everyone is welcome at the University of Huddersfield.



Faith and belief

Everyone is welcome to come along to our new Jo Cox More In Common Centre, where you will find a community space, separate male and female Muslim prayer rooms, ablution facilities, Christian and multi-faith rooms and a Chaplain's office.



Race equality

The University currently holds the Race Equality Charter Bronze Award. Advance HE's Race Equality Charter is a framework which supports universities to improve the representation, progression and success of Black, Asian and Minority Ethnic (B.A.M.E.) students and staff within Higher Education. As part of our commitment, we are implementing an action plan comprising a range of initiatives and changes to advance race equality across the University.



Gender equality

We hold an Athena SWAN Bronze Award for gender equality. The Athena SWAN Charter is a framework used across the globe to support and transform gender equality within Higher Education and research. The Charter guides institutions on how to achieve their gender equality objectives in terms of representation, student progression, career development and the working environment.



Applying for a taught degree

1



Choose >

Use our course lists in this prospectus to find your perfect course (pages 46-53). You can find more details about each course online.

If you're struggling with what to choose, why not come along to one of our **[Postgraduate Open Days](#)** to explore your options?

2



Check >

Check you are eligible for the course and meet the entry requirements, these are available for each course at **courses.hud.ac.uk**

For most postgraduate courses you can apply throughout the year, although we recommend that you apply as early as possible to secure your place.

3



Plan >

You will be required to write a Personal Statement as part of the application, and may need to upload supporting documents or provide a portfolio, depending on your chosen course.

Find out which documents to have ready: **hud.ac.uk/applypostgrad**

4

£

Funding >

Many students fund their own postgraduate study, however you may be eligible for a government Master's loan, 10% alumni discount*, or other financial support.

Find out more at hud.ac.uk/fees

Don't forget to check the funding application deadlines. They are usually between January and March.

5



Apply >

To apply, please complete an online application.

A full guide on how to apply, and a link to our application form, can be found on our website:

hud.ac.uk/applypostgrad

6



What next?

We'll give your application careful consideration.

Find out more about what happens next and what to do to confirm your place at hud.ac.uk/afterapply

*The 10% alumni discount applies to graduates of the University of Huddersfield who have previously completed a 3-4 year undergraduate Honours level degree at the University. The discount only applies to Home students for taught Master's programmes at the University.



Visit hud.ac.uk/applypostgrad to find out everything you need to know throughout the application process.



Postgraduate taught fees and funding

Postgraduate study is more accessible than you may think, thanks to government loans to support with tuition fees and your cost of living. Plus, if you're a graduate of the University of Huddersfield, we also offer a 10% alumni discount*.

Postgraduate fees

Full-time MA/MSc	Band 1 - £7,900 p/a Band 2 - £8,900 p/a Band 3 - £9,900 p/a Band 4 - £10,900 p/a
Part-time MA/MSc	Band 1 - £658 per 15 credit module Band 2 - £740 per 15 credit module Band 3 - £825 per 15 credit module Band 4 - £908 per 15 credit module
PGCE and PGDipE	Full-time - £9,250 Part-time - £4,625 plus (RPI-X)**
Master of Business Administration (MBA)	Full-time - £19,600 Part-time - Year 1: £9,845 / Year 2: £9,845
Clinical Pharmacy Practice	Full-time - £19,800 p/a

For detailed fee information relating to individual courses visit courses.hud.ac.uk.

All the fees above apply for one year from enrolment. Fees for subsequent years are charged at the then current rate.

Support for teacher training

If you're studying a teacher training course such as the Postgraduate Certificate in Education (PGCE) and the Certificate in Education (Lifelong Learning) you may be eligible for government funding. You can find out more on the course pages at courses.hud.ac.uk or on the Department for Education website at education.gov.uk/get-into-teaching.

If you have children

You may be able to get support with funding your studies, from postgraduate loans to Childcare Grants on certain courses. To find out more about Childcare Grants and to see which courses these apply to, call Student Finance England on 0300 100 0607, or visit gov.uk/childcare-grant.

International tuition fees

For information on international tuition fees please visit hud.ac.uk/international.

Distance Learning tuition fees

For information on our Distance Learning tuition fees [please visit our fees and finance web page](#).

*The 10% alumni discount applies to graduates of the University of Huddersfield who have previously completed a 3-4 year undergraduate Honours level degree at the University. The discount only applies to Home students for taught Master's programmes at the University.

**All figures quoted were correct at the time of printing.

*** (RPI-X) is set by the government.

You need to know...



Master's loans now available

The UK Government offers Master's loans, which allow you to borrow up to **£12,471**** towards your tuition fees and cost of living during your postgraduate studies. The loans are available to both full-time and part-time students on eligible courses and are provided by the Student Loans Company (SLC) through Student Finance England.



10% alumni discount*

We offer a 10% discount on postgraduate taught courses for University of Huddersfield Home alumni.

See our website for the latest information.



"I knew that I wanted to study a Master's degree, but I wasn't sure how to finance my studies. The University's Student Finance Team were helpful, friendly and very quick to respond which made the whole process easier and removed any stress."

"They informed me that there is a **10% alumni discount*** for returning Home students which reduced my fees. This was a massive help as it enabled me to keep my loan costs down and was a great incentive to return to university!"

Habiba Desai

English Literature Taught MA



Applying for a research degree

1



Check >

Check you meet our entry requirements. The general entry requirements for all our research degrees are a first or upper second-class honours degree (unless otherwise stated).

Ensure you check the research degree **deadline dates**.

2



Choose >

Choose your research area. There are different ways to find the right research topic for you, including designing your own project based on our **research expertise**, exploring our named projects, or browsing our funded opportunities. Find out more **on our website**.

If you can't decide, why not come along to one of our **Postgraduate Open Days** to explore your options?

3



Funding >

Many students fund their own postgraduate study, however you may be eligible for a Master's loan, Doctoral loan or other financial support.

We also have a number of research scholarships, studentships and specific funded research projects, details of which are available **online**.

If you are applying for a scholarship, please complete an **expression of interest form** instead of an application.

4



Apply



To apply, please complete an online research degree application form.

For most subjects you'll be required to submit a research proposal alongside your application. Please read through our [**research proposal guidelines**](#) to make sure you cover all the information needed.

More in-depth guidance on [**applying for a research degree**](#) is available online.

5



What next?

We'll send you acknowledgement via email so that you know we've received your application. You may be asked for additional documents to complete the process or be required to undertake an interview.

If your application is accepted, you will receive a conditional or unconditional offer by email.



Visit hud.ac.uk/postgraduate/research/how-to-apply to find out everything you need to know throughout the application process.



Postgraduate research fees and funding

Postgraduate research is more accessible than you may think, thanks to government loans to support with tuition fees and your cost of living. Plus, if you're a graduate of the University of Huddersfield, we also offer scholarship schemes which may help you on your way.

Postgraduate research fees

Full-time research**	£5,050 p/a
Part-time research**	£2,525 p/a

For detailed fee information relating to individual courses visit courses.hud.ac.uk.

All the fees above apply for one year from enrolment. Fees for subsequent years are charged at the then current rate.

Research scholarships

As a result of major expansion in University research activity, a number of research scholarships are now available. For more information and a complete list of research scholarships, **please visit our dedicated webpage.**

Bench fees

Additional costs (also known as bench fees) may be charged for research degrees where there are exceptional costs directly related to the research project. For example, this might be for equipment hire, access to specialist computer packages, etc.

If you wish to know if these costs will apply to the course you're interested in, please contact the Graduate School via email: **graduateschool@hud.ac.uk**.

International tuition fees

For information on international tuition fees, please visit **hud.ac.uk/international**.

*All figures quoted were correct at the time of printing.

**Programmes include Master's by Research, Master of Philosophy, Doctor of Philosophy, Doctor of Enterprise and Doctor of Education.



"I was very fortunate to receive a full fee waiver with a Vice-Chancellor's Scholarship. The scholarship has allowed me to continue my studies without the need of a part-time job - allowing me to focus more on my academic work and future development."

Connor Simpson

PhD History

You need to know...



Doctoral loans now available

The UK Government has introduced Doctoral loans, which allow you to borrow up to **£29,390*** towards your research fees and cost of living during your doctoral studies. The loans are provided by the Student Loans Company (SLC) through Student Finance England.



Vice-Chancellor's scholarship scheme

We're passionate about research and making a difference to the world we live in. To help us make this difference, we seek the very best University of Huddersfield graduates to participate in our Vice-Chancellor's Scholarship Scheme, which gives those selected access to a full tuition fee waiver on their research degree***. Find full details and eligibility criteria on [our website](https://www.hud.ac.uk/postgraduate).

*** UK Home students, international students may be entitled to a 50% fee waiver.



Our research centres and institutes

Our research centres and institutes address global challenges facing society today and in the future. Here is a selection of some of our centres and institutes from across the University:



Northern Productivity Hub 

Located in Huddersfield Business School, the Northern Productivity Hub researchers have interests relating to the productivity of private and public institutions, the impact of the economy, and regulations.

The aim of the Hub is to generate and disseminate high-quality research that has potential to inform and shape academic debates and influence policy and practice.

Within the Hub there are four research themes:

- Supply chains
- Digital transformation
- Applied finance and economics
- Human capital

The Hub facilitates collaboration between researchers from different disciplines and aims to promote innovation, fresh insights and contribute to a robust evidence base.



Institute of Railway Research 

The Institute of Railway Research (IRR) is a world class centre for railway engineering research, development and technology innovation. The IRR's work has helped protect the railway's most critical assets, de-risking design and reducing operating and maintenance costs, whilst increasing reliability and safety. In 2019 the IRR was awarded the Queen's Anniversary Prize for research and development that has brought significant improvements to the railway industry.

The IRR hosts the UK Rail Research and Innovation Network's (UKRRIN) Centre of Excellence in Rolling Stock, and with over £14m invested in state-of-the-art laboratory facilities, we work alongside our industrial and academic partners to deliver high impact research across a range of engineering disciplines. Looking to the future, the IRR is applying the latest techniques in robotic automation, data science and remote condition monitoring, supporting the rail industry in developing the next generation of rolling stock and infrastructure maintenance solutions.



Explore our other centres and institutes

The Institute for Skin Integrity and Infection Prevention



The Institute for Skin Integrity and Infection Prevention (ISlaIP) is a world-leading centre in the field of skin integrity and wound care research. Comprising of a multi-disciplinary international team of experts, it is at the forefront of research and teaching in the management of acute and chronic non-healing wounds.

The ISlaIP is represented on regional, national and international bodies and contributes towards the development of policies and health system improvements. As well as undertaking contract and consultancy research with industry, the team also delivers high quality education, training the next generation of health care practitioners, scientists, engineers and product designers.

Annually, £8.3 billion is spent on wound management in the UK, of which 67% is incurred managing unhealed wounds (Guest et al., 2015). Over 70% of cost is associated with nurse, doctor, or healthcare assistant visits. In the UK, the costs of treating related Health Care Associated Infections (HCAs), particularly surgical site infections (SSIs), has been estimated to represent a further £1bn.

The aim of the ISlaIP is to promote a fully integrated and coordinated applied science approach to research that can be applied in clinical practice, focusing on some of the most fundamental and important aspects of wound care.



Technical Textiles Research Centre



The Technical Textiles Research Centre at the University of Huddersfield aims to re-establish the town and region as a world leader in textiles by harnessing the newest technology and manufacturing techniques, and by working closely with the industry. The centre has received considerable interest from UK textile manufacturers from a wide array of applications, as well as overseas commercial and academic organisations. The focus is on high-performance technical textiles that are bespoke and of high quality. Huddersfield's heritage as a significant centre for the chemical industry is another catalyst for the research centre.

The centre brings together expertise in disparate fields of science, including technical textiles, engineering, digital technology, textile processing, cellulose science, medical textiles (implantable, non-implantable, healthcare environment materials), fibre and polymer chemistry, pharmacology, surface functionalisation and material science.

A key objective of the research centre is to address several serious global challenges and to be solution-driven, not subject-driven. For example, a desire of the centre to influence the replacement of petrochemical-derived fibres with more sustainable, renewable alternatives is in direct synergy with the Global Challenge to achieve NetZero.



Our research students

We asked a selection of our research students to share what makes studying at Huddersfield the best choice for them.

“I was thrilled at the prospect of taking this new step in my career.”

“I am a full-time PhD student in the Technical Textiles Research Centre, and I am also a parent of young children, with a three hour round trip commute to campus. When I’m not doing lab work, I am able to work from home, and this has been indispensable in enabling me to carry out my studies effectively.

“Juggling parenting and research is certainly a challenge - but an exciting one that has taught me to be more efficient in my work.

“My experience so far has allowed me to develop an array of practical lab skills and I have developed my communication skills by presenting at conferences. I have been supported to undertake training courses relevant to my research, I have been encouraged to build my network and have forged links with other centres at the University that continue to support my research and development.”

Ashleigh Naysmith

Fashion and Textiles/Material Science PhD





“The University is a friendly, student-centred learning environment where staff are welcoming and supportive.”

“My PhD journey is full of opportunities for me to grow professionally and personally. For example, assisting academic and faculty staff members in teaching has provided me with opportunities to develop crucial skills and gain experience of teaching in academia.

“The research room, which is my favourite study space, provides a way to link up with other research students. They are a great source of support. Making connections with fellow PhD students also opens a window of opportunity to know more people and expand my professional networks.

“My PhD has set me on a challenging but fulfilling journey. I believe that building meaningful supportive relationships and embracing opportunities for learning is vital not only for my PhD journey but also for my future academic career.”

Hoang Nguyen

TESOL PhD



The Graduate School

As a postgraduate researcher (PGR) you are part of The Graduate School, which brings together staff and services from across the University to help you reach your potential.

You are provided with an enriching environment, which fosters intellectual and social interaction between researchers, supervisors, and collaborative partners from across the globe.

The Graduate School is committed to helping your PGR journey by:

- fostering an inclusive and supportive research culture;
- developing a community of cross and interdisciplinary researchers;
- facilitating innovative and creative training opportunities;
- encouraging collaborative relationships between PGRs and academic staff;
- offering a variety of courses to enhance professional development and employability.



“The Graduate School promotes a research culture that recognises the diversity of researchers’ experiences and aspirations and will help you make the most of the resources and opportunities available to support your research, training, and academic development.”

Professor Monty Adkins

Dean of the Graduate School

Research support

We provide specialist support for our postgraduate researchers by enabling you to develop your skills and knowledge, and to discover new and exciting opportunities.

Develop your knowledge and skills

We have an exciting and comprehensive Researcher Skills Development Programme available to all of our postgraduate researchers. This enables you to broaden your knowledge and access tools and skills which can significantly improve your research journey and employability. The programme is also mapped onto Vitae's Researcher Development Framework (RDF), helping you to plan a pathway to suit your own needs and interests.



World-class

Over 60% of our research environment was classified as world leading and internationally excellent, especially in Music, Biological Sciences, Architecture and the Built Environment, Social Work and Social Policy, History and Communication and Media Studies. (REF2021)

Flexible learning

We offer online, video and webinar training to fit around your lifestyle, as well as face-to-face training. The University has access to a range of online resources relating to all stages of the research journey, which you can work through at your own pace. PGRs can also access our Learning and Teaching in Higher Education courses, which have aided many of our PGRs to attain Associate Fellowship with Advance HE. In addition to this, we subscribe to the University of East Anglia Online Training Series, and we are part of the North West and Yorkshire PGR Training Group, which allows our postgraduate researchers to attend relevant training opportunities at other nearby universities.

Postgraduate Research Conference

Organised by current postgraduate researchers, this annual conference provides the opportunity to present your work to a multidisciplinary audience, resulting in constructive feedback, peer support and networking opportunities.



Postgraduate research academics

We have a vast range of postgraduate research academics covering a variety of research topics. Meet some of them here, and find out about their research experience.



Dr Camilo Gomez 

Growing up amidst the turbulence of the 1980's in Colombia, Camilo became fascinated by how individuals in violent and fragile social environments could transform their suffering into socio-political actions. This curiosity guided his academic pursuits, and over the last 20 years he has engaged in social research across Central and Latin America and Europe; delving into topics such as culture, security and the mass media's role in armed conflict, violence and post conflict settings.

As well as academic research, Camilo has contributed to the field through a variety of advisory and expert roles for the United Nations Development Programme (UNDP). Currently, Camilo is involved in the United Nations' efforts to establish an international convention on countering cybercrime; analysing the significance of citizen-led approaches in preventing it.

Notably, Camilo has supported the political negotiations for the Colombian Peace Agreement, advised Colombia's Truth and Reconciliation Commission, and influenced public policies at international, national and local levels.



Nicola Gray 

Nicola is Senior Lecturer in Pharmacy Practice at the University of Huddersfield. Registered as a pharmacist in 1991, she has worked in hospital, community and academic pharmacy. She is the co-Chair of the UNESCO Chair 'Global Health and Education', in partnership with Prof Didier Jourdan at the Université Clermont Auvergne in France. They have a mandate from the UN to produce and share knowledge about health and wellbeing in schools, lifelong learning about health, and the public health potential of community health settings. Nicola also has a particular research interest in the wellbeing of young people living with chronic illness.

She was awarded Fellowship of the Royal Pharmaceutical Society in 2018 for distinction in the profession of pharmacy, and Fellowship of the US Society for Adolescent Health and Medicine in 2010 for national leadership and research. She is a Trustee of the UK Association for Young People's Health and Vice-President for Europe of the International Association for Adolescent Health.



Dr Preston's work
has won major
international awards

Dr Yan Wang Preston ✨

Dr Preston is a senior lecturer at the University of Huddersfield and a practising artist, looking at landscape and identity; how a landscape picture can express a sense of belonging and a sense of place. Her major projects include: 'Mother River' (2010-2014), for which she photographed the entire 6,211km Yangtze River in China at precise 100km intervals on a large-format film camera; and 'Forest' (2010-2017), for which she investigated the politics of reforestation and ecology recovery in new Chinese cities.

Dr Preston's work has won major international awards such as the Shiseido Photographer Prize at the Three Shadows Photography Annual Award in Beijing, China (2016), the first prize, Professional Commission, Syngenta Photography Award (2017), Hundred Heroines, the Royal Photographic Society (2018), and the first prize, Professional Landscape, Sony World Photography Awards (2019).



Discover all
of our research
academics



Our campus

To achieve great things at university, you don't just need inspirational teaching. Top class facilities and resources help too.

When you explore our campus, you'll find evidence of Huddersfield's proud industrial heritage, with beautifully converted stone mills and a working canal. Plus, thanks to our ongoing investment, there are plenty of impressive 21st Century buildings too.

A green and sustainable campus

At Huddersfield we're committed to sustainability, reducing our impact on the environment and tackling the Climate Emergency.

We're increasingly aware of the impact our buildings and open spaces can have on the wellbeing of those who use them.

We're incorporating wellbeing improvement measures into our buildings, new and old, to provide learning environments that you can thrive in.

Read more about sustainability at Huddersfield:

hud.ac.uk/sustainability



£157
million

has been invested in exciting new buildings to make our campus an amazing place to learn.



Green
campus

Our campus will be carbon neutral by 2030.



View our campus
map online



Take a virtual
tour of campus





John Smith's Stadium



Standedge Tunnel and Visitor Centre



Huddersfield's historic railway station



Holmfirth

Explore Huddersfield

Huddersfield is perfectly located, close to beautiful countryside as well as exciting cities.

Huddersfield offers a huge choice of restaurants, cafés, clubs and bars, and is renowned for its traditional pubs and microbreweries. Arts and culture thrive here too, with a busy music, theatre and festival scene right on your doorstep. Surrounded by spectacular open countryside, living in Huddersfield gives you the space to breathe, exercise and relax in stunning scenery. And if sport is your thing, Huddersfield Town Football Club and Huddersfield Giants share a stadium on the edge of town.



Greenhead Park



Lawrence Batley Theatre

Huddersfield has great transport links and easy access to the M1 and M62.



Find out all you need to know about spending the perfect day or evening in Huddersfield

Castle Hill





Accommodation

Huddersfield has some great options when it comes to accommodation.

HudLets, run by the Students' Union, offers a range of high-quality accommodation options. You can access impartial advice, support and guidance about housing from the Students' Union too.

Booking through HudLets is easy. View and compare a range of properties – houses, halls or studios, all in one place. We have something to suit everyone at a price that doesn't compromise on quality or comfort.

All our halls are based just a few minutes' walk from campus, have ensuite bathrooms and a range of additional facilities such as social spaces, study spaces, and even a gym.

Got a question?

Visit us at our office in Student Central

+44 (0)1484 258601

hudlets@hud.ac.uk

hudlets.co.uk



Explore accommodation
options with HudLets





Take a look
before you book.
View our 360
virtual tours



Huddersfield has the
second lowest student
rent in the UK.*

*Save the Student (2023).





Postgraduate taught courses

Explore our range of postgraduate taught courses. To find out more details about each course, please visit our website.



Browse courses
and apply





Accounting, Finance and Economics

[Accounting and Finance MSc](#)

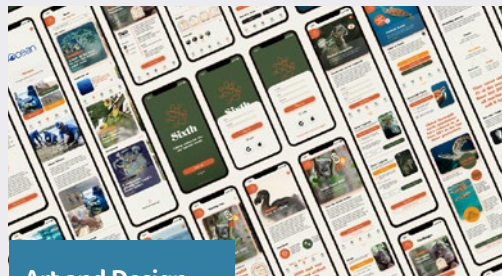
[Banking and Finance MSc](#)

[Business Intelligence and Analytics MSc](#)

[Economics MSc](#)

[Finance MSc](#)

[Fintech MSc](#)



Art and Design

[Animation Production MA](#)

[Contemporary Fine Art MA](#)

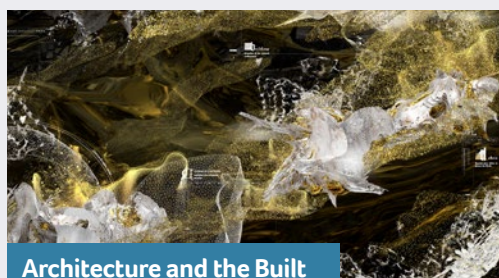
[Graphic Design MA](#)

[Illustration MA](#)

[Interior Design MA](#)

[Photography MA](#)

[Product Design MA](#)



Architecture and the Built Environment

[Architectural Design MA](#)

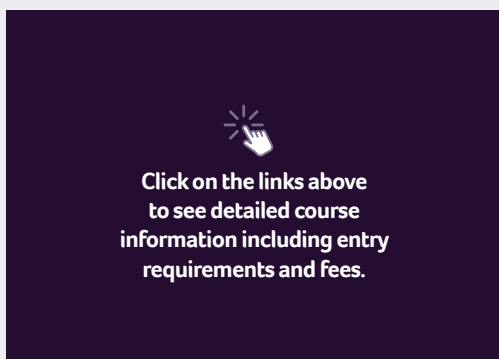
[Advanced Project Management in Construction MSc](#)

[Master of Architecture/Architecture \(International\) \(RIBA Part 2\)](#)



Biomedical and Analytical Science

[Biomedical and Analytical Science MSc](#)



Click on the links above
to see detailed course
information including entry
requirements and fees.



Business Intelligence and FinTech

[Business Intelligence and Analytics MSc](#)

[Fintech MSc](#)



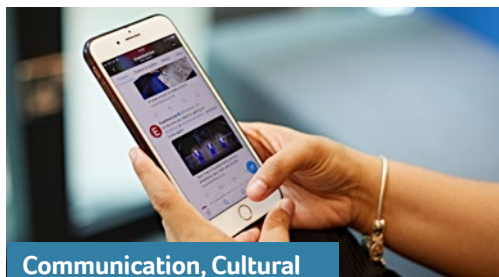
Chemistry and Chemical Engineering

[Analytical Chemistry MSc](#)

[Biomedical and Analytical Science MSc](#)

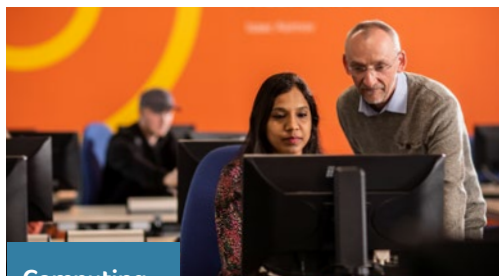
[Pharmaceutical and Analytical Science MSc](#)

[Chemical Process Engineering and Safety MSc](#)



Communication, Cultural and Media Studies

[Journalism, Media and Film MA](#)



Computing

[Applied Artificial Intelligence MSc](#)

[Applied Artificial Intelligence MSc \(Distance Learning\)](#)

[Artificial Intelligence MSc](#)

[Artificial Intelligence MSc \(Distance Learning\)](#)

[Computing MSc](#)

[Cyber Security and Digital Forensics MSc](#)

[Cyber Security and Digital Forensics MSc \(Distance Learning\)](#)

[Data Analytics MSc](#)

[Data Analytics MSc \(Distance Learning\)](#)

[Information Systems Management MSc](#)



Education Studies and Continuing Professional Development (CPD)

[Career Development and Employability PgDip](#)

[Career Development and Employability PgDip, \(Distance Learning\)](#)

[Career Development and Employability MA](#)

[Career Development and Employability MA, \(Distance Learning\)](#)

[Education \(Early Childhood Studies\) MA](#)

[Education \(Leadership and Management\) MA](#)

[Education \(Leadership and Management\) MA \(Distance Learning\)](#)

[Education \(MA by Research\)](#)

[Education \(Special Educational Needs\) MA](#)

[Education \(Teaching and Learning\) MA](#)

[Education \(Technology Enhanced Learning\) MA](#)

[Education \(Vocational Education and Training\) MA](#)

[Education \(Youth and Community\) MA](#)

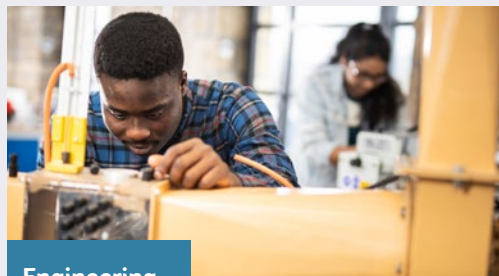
[Higher Education MA](#)

[Higher Education PgCert](#)

[Teaching English to Speakers of Other Languages \(TESOL\) MA](#)

[Teaching English to Speakers of Other Languages \(TESOL\) \(with Placement\) MA](#)

[Teaching in Lifelong Learning \(Top-Up\) MA](#)



Engineering

[Automotive Engineering MSc](#)

[Electronic and Automotive Engineering MSc](#)

[Engineering Control Systems and Instrumentation MSc](#)

[Engineering Management MSc](#)

[Mechanical Engineering MSc](#)

[Oil and Gas Engineering MSc](#)

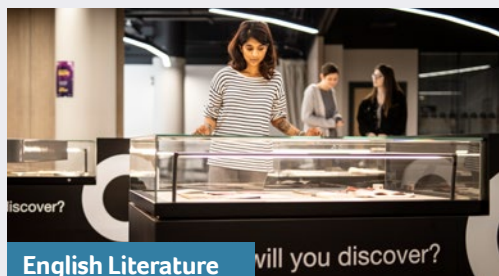


Fashion and Textiles

[Fashion Design MA](#)

[Fashion Marketing MA](#)

[Textiles MA](#)



English Literature and History

[Creative Writing MA](#)

[English MA](#)

[English Literature MA](#)

[History MA](#)



Forensic Science

[Forensic Science \(Forensic Chemistry\) MSc](#)

[Forensic Science \(Forensic Biology\) MSc](#)

Click on the links above to see detailed course information including entry requirements and fees.



Health

[Acute Care PgCert](#)
[Advanced Clinical Practice MSc](#)
[Advanced Clinical Practice \(Apprenticeship\) MSc](#)
[Critical Care PgCert](#)
[Emergency Care PgCert](#)
[Health Professional Education PgCert](#)
[Health Studies MSc](#)
[Long Term Conditions PgCert](#)
[Master of Podiatric Surgery](#)
[Master of Public Health](#)
[Master of Public Health \(Global\)](#)
[Master of Public Health \(Advanced Practitioner\)](#)
[Master of Public Health \(Global Advanced Practitioner\)](#)
[Master of Public Health \(Management and Leadership\)](#)
[Nursing \(Pre-Registration\) Adult MSc](#)
[Registered Nurse Degree Apprenticeship \(Adult\) \(Blended Learning\) MSc](#)
[Nursing \(Pre-Registration\) Adult \(Blended Learning\) MSc](#)
[Nursing \(Pre-Registration\) Child MSc](#)
[Nursing \(Pre-Registration\) Learning Disability MSc](#)
[Nursing \(Pre-Registration\) Mental Health MSc](#)
[Palliative and End-of-Life Care PgCert](#)
[Paramedic Science \(Pre-Registration\) MSc](#)
[Podiatry MSc](#)
[Social Work MSc](#)
[Theory of Podiatric Surgery MSc](#)
[Tissue Viability and Leg Ulcer Management PgCert](#)
[Urgent Care PgCert](#)



International Business

[International Business MSc](#)
[International Business with Entrepreneurship MSc](#)
[International Business with Humanitarian Challenges MSc](#)
[International Business with Marketing MSc](#)
[International Business with Project Management MSc](#)
[International Business with Tourism and Hospitality MSc](#)



Law

[International Business Law LLM](#)
[International Corporate and Commercial Law LLM](#)
[International Law LLM](#)



Logistics and Operations

[Business Intelligence and Analytics MSc](#)

[Logistics and Supply Chain Management MSc](#)

[Project Management and Operations Management MSc](#)

[Supply Chain Management with Humanitarian Challenges MSc](#)

[Sustainable Supply Chain Management MSc](#)

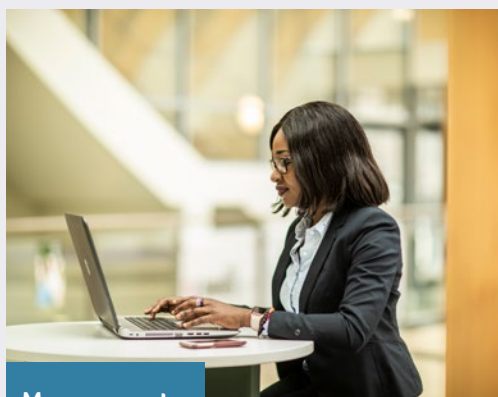


Marketing

[Digital Marketing MSc](#)

[Marketing MSc](#)

[Marketing with Brand Management MSc](#)



Management

[Management MSc](#)

[Management MSc \(Distance Learning\)](#)

[Management with Communication MSc](#)

[Management with Entrepreneurship MSc](#)

[Management with Human Resource Management MSc](#)

[Management with International Business MSc](#)

[Management with Leadership MSc](#)

[Management with Marketing MSc](#)

[Management with Tourism and Hospitality MSc](#)



Mathematics

[Data Analytics MSc](#)

[Data Analytics MSc \(Distance Learning\)](#)

Click on the links above to see detailed course information including entry requirements and fees.



Music and Music Technology

[Creative Music Production MA](#)

[Music Performance MMus](#)



Professional Development

[Doctor of Business Administration \(DBA\)](#)

[Doctor of Public Administration \(DPA\)](#)

[Master of Business Administration \(MBA\)](#)

[Master of Public Administration \(MPA\)](#)

[Senior Leader Higher \(Apprenticeship\) Level 7 PgDip](#)



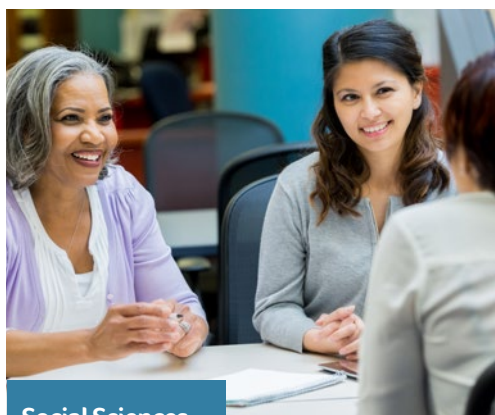
Pharmacy

[Clinical Pharmacy Practice with Community Placement MSc*](#)

[Clinical Pharmacy Practice with Hospital Placement MSc*](#)

[Clinical Pharmacy Practice with Research Project MSc*](#)

[Pharmaceutical and Analytical Science MSc](#)



Social Sciences

[Cognition and Neuroscience MSc](#)

[Investigative Psychology MSc](#)

[Investigative Psychology MSc \(Distance Learning\)](#)

[Psychology MSc](#)

[Psychology \(Conversion\) MSc \(Distance Learning\)](#)

[Social Work MSc](#)

*For international students only.

Click on the links above to see detailed course information including entry requirements and fees.



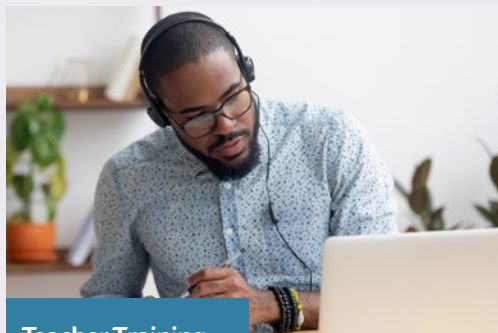
Strategic Communication and Leadership

Leadership, Communication and Humanitarian Challenges MSc

Strategic Communication and Leadership MSc

Strategic Communication, Leadership and Sustainability MSc

Sustainable Business Leadership MSc



Teacher Training

Early Years Initial Teacher Training (EYTS)

Graduate Employment

Lifelong Learning PGCE in-service

Lifelong Learning PGCE pre-service

Primary and Early Years Education PGCE with QTS

Primary Education PGCE with QTS

Secondary Design & Technology PGCE with QTS

Secondary Geography PGCE with QTS

Secondary Modern Languages PGCE with QTS

Secondary Physical Education PGCE with QTS

Secondary Religious Education PGCE with QTS





Research areas of expertise

We offer a range of research degrees, and there are multiple ways to discover these:

- Find an existing topic and supervisor using our **Coursefinder**. You can find a list of our broad topics on pages 60–61.
- Browse our **funded opportunities**.
- **Find a supervisor** and design your own research project.
- Explore our expertise across a range of disciplines and specialties. Applications are welcomed, but not limited to, the following research areas:



Find out more
on how to apply for
a research degree

Huddersfield Business School

Management

Business ethics and ethical leadership
Corporate communications and public relations
Corporate social responsibility and non-market strategy
Cross-cultural management and global business
Food security and sustainability
Gender, entrepreneurship and small and medium enterprises (SMEs)

Industrial strategy and business innovation
International strategy and emerging markets
Organisational leadership and practice
Organisational learning and strategic change
Responsible management education

Visit our [research homepage](#) to find out more about our research options and expertise.

Huddersfield Business School (cont.)

Logistics, Transport, Operations and Analytics

Aviation economics
 Big data analytics in supply chain
 Circular economy/circular supply chain management
 Connected and autonomous vehicles
 Industry 4.0, circular economy and industry 5.0
 Project management
 Service innovation management
 Social media analytics
 Supply chain resilience
 Sustainable mobility
 Technological innovation in supply chains

Accounting, Finance and Economics

Applied econometrics, including labour micro econometrics and topics in macro/financial economics

Climate economics
 Corporate finance banking
 Income and productivity
 Modelling technology adoption
 Risk analytics
 Trade economics
 Welfare economics/wellbeing

Law

Children's rights and child law
 Criminal law
 Disability law
 Environmental and energy law
 Human rights
 International business law
 International law
 Trade law





School of Applied Sciences

Analytical chemistry	Measurement, assessment and treatment for myopia
Application of ocular imaging to visual function	Microbial therapeutics and infection control
Archaeogenetics and evolution	Molecular medicine
Biochemistry	Natural products
Bioinformatics	Ocular haemodynamics in health and disease
Biomarker research	Optometry
Biopolymer research	Pharmaceutics and drug delivery
Biorefinery engineering and bioprocessing	Pharmacology and therapeutics
Cancer	Pharmacy practice
Cellular and molecular models of disease	Photoreactive chemistry
Chemical synthesis and design	Public Health
Enzymology	Remote sensing
Functional materials	Science
Geoscience	Structural, molecular and dynamic modelling
GIS	Vision and crowding during development and in amblyopia
Innovative teaching methods in optometry education	

Visit our [research homepage](#) to find out more about our research options and expertise.

School of Arts and Humanities

Architecture and the Built Environment

Architectural design
 Architectural education
 Architectural history and philosophy
 Architectural representation in VR/XR
 Architecture and narrative
 Architecture and science fiction
 Architecture and the moving-image including 3D scanning
 Architecture, art, culture, creativity, health and nature
 Building Information Modelling (BIM)
 Climate change and decarbonisation through design and construction
 Construction cost management
 Construction project management
 Culture-led regeneration projects
 Design automation
 Design management
 Digital heritage
 Disaster resilience
 Healthcare design
 Lean construction
 Modelling, simulation and serious games
 Off-site construction
 Process and performance management
 Requirements capture and management
 Social housing retrofit and users value
 Supply chain management
 Sustainability
 Sustainable environmental design and energy efficiency
 Sustainable high-rise building design, technology, and innovation
 Sustainable living
 Sustainable rural village development
 Tall buildings façade applications
 Urban design
 Value generation in design

Art and Design

Art history and cultural theory
 Co-creative research with communities
 Contemporary challenges
 Creative ecologies in art and design
 Creative health
 Curatorial investigations
 Cultural leadership and public engagement
 Design for healthcare
 Expanded practices in art and design
 Graphic design and publishing
 Heritage practices
 Illustration and moving image
 Interdisciplinary research
 Photographic practices
 Photography theory and practice
 Place-based thinking and making
 Practice-based research
 Product design research
 Sculpture studies

Communication, Cultural and Media Studies

Cultural globalisation
 Digital media and culture
 Fan cultures
 Film and television studies
 Investigative journalism
 Journalism practice and theory
 Media and identity (including questions of ethnicity and gender)
 Media and power
 Media and sport
 Media history
 Media industries policy and regulation
 Platforms, platformisation, data and algorithms
 The interplay of popular and political communication
 User participation, user-generated content and transmedia narratives



School of Arts and Humanities (cont.)

Drama, Dance and Performance

Audiovisual practice research in performance
Critical approaches to identity in performance
Drama, theatre and performance
Immersive theatre and performance magic
Performer training and ensemble practices

English Literature and Creative Writing

Affect and literature
Contemporary writing
Ecocriticism and literature
Literature and philosophy
Poetry and social engagement
The Brontës
The realist novel
Twentieth-century poetry
Victorian literature and culture
Writing place
Writing the popular

Fashion and Textiles

Costume studies
Creative pattern cutting and technologies
Design pedagogy
Fashion design
Fashion ecology, economics and business engagement
Fashion retail and social media
Product innovation with textiles
Sustainable textile production
Technical textiles
Textile crafts and textile futures
Textile design
Textile technology and textile chemistry

History

Culture, religion and society of the medieval and early modern periods
Global history, including histories of internationalism and humanitarian intervention
Public history and community heritage, oral history
The history of health, welfare and wellbeing

Music and Music Technology

Composition (including instrumental, electronic, electroacoustic and mixed media)
Creative music production
Cultural, historical and critical musicologies
Film and video game composition and musicology
Historically informed performance practices
Music archaeology and evolutionary musicology
Music technology, including creative coding
Music theory and analysis
Music, gender and identity
Performance of contemporary music and improvisation
Popular music, including performance, songwriting and musicology
Sonic arts





School of Computing and Engineering

Computing

Artificial intelligence
Big data
Computing security frameworks
Data analytics
Digital skills
Digital twinning
Internet of Things
Mathematical modelling
Robotics
Smart healthcare
Smart home technology
Smart modelling

Engineering

3D imaging
3D printing
Advanced measurement techniques
Dynamic visualisation
Heat transfer management
Ion beam technology
Medical engineering
NeuBeam technology
Precision manufacturing
Railway research
Renewable energy
Robotic manufacturing
S&C monitoring
Smart home technology
Sound engineering
Turbo machines



School of Education

Children, young people and childhood

Children's voices, rights and participation
 Creative, arts-based and play-based research methods
 Early childhood education and care
 Early childhood education and early years with a focus on children's perspectives, creativity, agency and voice
 Participatory methods
 Practice in primary school
 Professionalism and leadership in ECEC
 Research with children and young people
 esp. re wellbeing, nature connection, post-covid recovery, children's relationships with their urban/ local/ rural environments
 School readiness

Education, extremism and race

Community cohesion and ethnic integration within student bodies
 Educators 'safeguarding' against extremism
 Educators and anti-extremism/anti-racism educational practice
 Ethnic minority entry to and experience of initial teacher training
 Ethnic/faith minority pupil attainment
 Preventing/countering violent extremism policies and their relationship to education in different national settings
 School choice and ethnic/faith community cohesion
 The 'Prevent Duty' and its implementation within different educational sectors

Marginalised youth, education and employment

Graduates, 'employability' and youth transitions
 (Re)-entering the labour market after being NEET experienced
 Special schools, SEND and youth transitions to adulthood
 The dynamics of the youth labour market for working-class young people
 Understanding youth 'economic inactivity'
 Young people, poverty, and social exclusion
 Youth work/informal work with young people

Teacher Education

Curriculum, pedagogy, and assessment
 Issues in teaching and supporting SEND
 Issues in teaching English to speakers of other languages (TESOL)
 Mentoring and coaching
 The effects of local or national policy on the field of teacher education

Technical, vocational and further education

Adult education and lifelong learning
 Mentoring and coaching
 Skills and national development
 Sociology of work and education
 Technical and vocational education and training
 Technical and vocational teacher/tutor education
 Widening participation



School of Human and Health Sciences

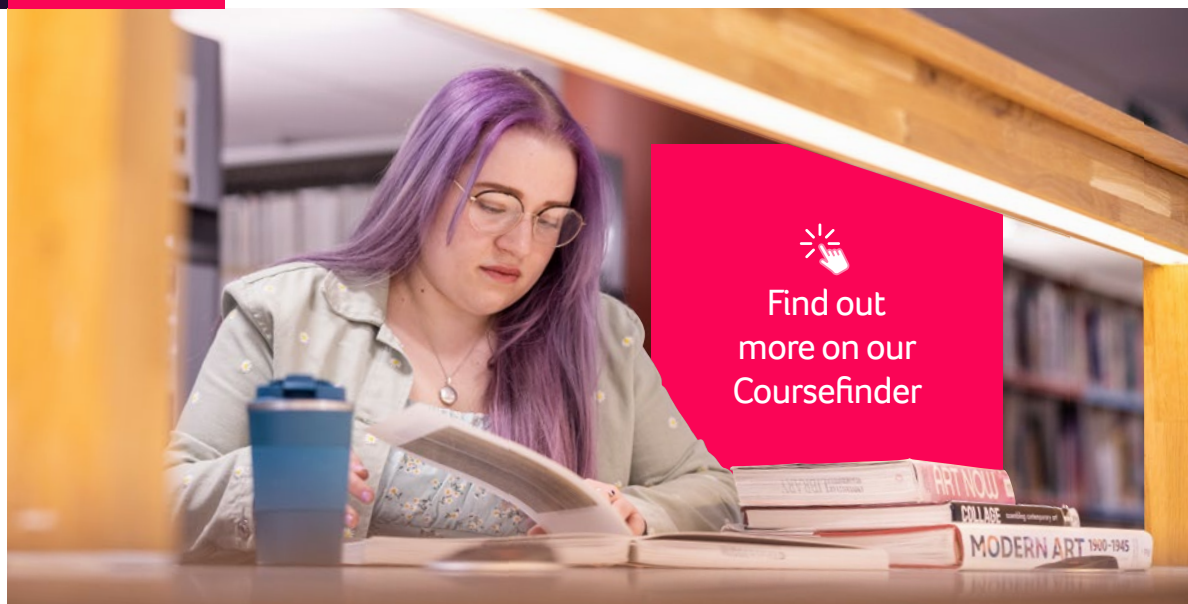
Health and wellbeing

Acute and long-term conditions management
 Adolescent sexual health
 Advanced healthcare materials
 Advanced practice in health and care
 Antimicrobial resistance and antimicrobial stewardship
 Disability
 Gait and biomechanics
 Global health
 Health and care workforce recruitment, retention and internationalisation
 Healthy ageing
 Infection prevention
 Maternal and family health
 Mental health and wellbeing
 Palliative and end of life care, death and dying
 Patient and public involvement in health service delivery
 Person-centred and compassionate practice in health and care
 Physical activity for health and wellbeing
 Pregnancy experience and outcomes
 Professional education and workforce development
 Public health
 Skin integrity and tissue viability
 Social determinants of health and health inequalities
 Social prescribing and creative health
 Spirituality in health and care
 Sport, exercise and nutrition for performance/ elite athletes
 Workforce health and wellbeing
 Wounds and wound care

Human and social sciences

Applied cognitive psychology
 Child and family social work and child protection
 Child sexual abuse and exploitation, and domestic violence
 Children's rights and childhood
 Citizen participation, urban governance and new social movements
 Cognitive neuroscience
 Cyber crime
 Designing out crime
 Diversity and inclusion
 Equality, diversity and intersectionality
 Feminist research approaches
 Forensic science
 Fuel poverty and housing energy efficiency
 Gender and sexuality
 Gender-based violence
 Housing homelessness and inequalities
 Investigative psychology
 Migration, asylum and resettlement
 Modern slavery and human trafficking
 Neural, cognitive and behavioural science of decision making
 Neurodiversity and development
 Older people, aging and wellbeing
 Participatory, visual and arts-based research with children and young people
 Police decision-making
 Psychology of health and wellbeing
 Psychopathy criminal social identity
 Resilience and wellbeing in professional practice
 Self-selection policing
 Sexworking
 Social inequality and wellbeing
 Urban governance, citizen participation, activism and social movements
 Young people, place and wellbeing
 Youth and social exclusion
 Youth health risk behaviours and wellbeing





Find out
more on our
Coursefinder

Research degrees

Some subjects have named projects that you can apply for.
These include:

Huddersfield Business School

[Business and Management Studies \(MA by Research\)](#)
[Business and Management Studies \(MSc by Research\)](#)
[Business and Management Studies \(PhD\)](#)
[Doctor of Business Administration \(PhD\)](#)
[Doctor of Public Administration \(PhD\)](#)

[Economics and Econometrics \(MA by Research\)](#)
[Economics and Econometrics \(MSc by Research\)](#)
[Economics and Econometrics \(PhD\)](#)
[Law \(PhD\)](#)

School of Applied Sciences

[Biological Sciences \(MSc by Research\)](#)
[Biological Sciences \(PhD\)](#)
[Chemical Engineering \(MSc by Research\)](#)
[Chemical Engineering \(PhD\)](#)
[Chemistry \(MSc by Research\)](#)
[Chemistry \(PhD\)](#)
[Forensic Science \(MSc by Research\)](#)

[Forensic Science \(PhD\)](#)
[Geography \(MSc by Research\)](#)
[Optometry and Vision Sciences \(PhD\)](#)
[Pharmacy and Pharmaceutical Sciences \(MSc by Research\)](#)
[Pharmacy and Pharmaceutical Sciences \(PhD\)](#)

Visit our [research homepage](#) to find out more about our research options and expertise.

School of Arts and Humanities

[Architecture and the Built Environment \(MSc by Research\)](#)

[Architecture and the Built Environment \(PhD\)](#)

[Art and Design \(MA by Research\)](#)

[Art and Design \(MSc by Research\)](#)

[Art and Design \(PhD\)](#)

[Communication, Cultural and Media Studies \(MA by Research\)](#)

[Communication, Cultural and Media Studies \(PhD\)](#)

[Creative Writing \(MA by Research\)](#)

[Creative Writing \(PhD\)](#)

[Drama, Dance and Performance \(MA by Research\)](#)

[Drama, Dance and Performance \(PhD\)](#)

[English Literature \(MA by Research\)](#)

[English Literature \(PhD\)](#)

[Fashion and Textiles \(MA by Research\)](#)

[Fashion and Textiles \(MSc by Research\)](#)

[Fashion and Textiles \(PhD\)](#)

[History \(MA by Research\)](#)

[History \(PhD\)](#)

[Music \(MA by Research\)](#)

[Music \(PhD\)](#)

School of Computing and Engineering

[Computer Science and Informatics \(MSc by Research\)](#)

[Computer Science and Informatics \(PhD\)](#)

[Engineering \(MSc by Research\)](#)

[Engineering \(PhD\)](#)

[Physics \(MSc by Research\)](#)

[Physics \(PhD\)](#)

School of Education

[Education \(MA by Research\)](#)

[Education \(PhD\)](#)

[Education edD, Doctor of \(PhD\)](#)

School of Human and Health Sciences

[Applied Health Sciences \(MSc by Research\)](#)

[Applied Health Sciences \(PhD\)](#)

[Criminology/Criminal Justice \(MSc by Research\)](#)

[Criminology/Criminal Justice \(PhD\)](#)

[Nursing and Midwifery \(MSc by Research\)](#)

[Nursing and Midwifery \(PhD\)](#)

[Psychology \(MSc by Research\)](#)

[Psychology \(PhD\)](#)

[Public Health \(MSc by Research\)](#)

[Public Health \(PhD\)](#)

[Social Work and Social Policy \(MSc by Research\)](#)

[Social Work and Social Policy \(PhD\)](#)

[Sociology \(MSc by Research\)](#)

[Sociology \(PhD\)](#)



Master's courses with placements

Specifically aimed at international students, our Master's courses with a placement support those wishing to gain practical work-based experience. Together with studying your chosen course, you have the opportunity to undertake an additional six-month placement, making the course 18 months in length. This allows you to put into practice the skills and techniques developed throughout your Master's degree within a UK environment.



[Browse courses and apply](#)

Huddersfield Business School

Click on the links below to see detailed course information including entry requirements and fees.

Accounting, Finance and Economics

[Accounting and Finance MSc](#)
[Banking and Finance MSc](#)
[Economics MSc \(conversion\)](#)
[Finance MSc](#)
[Fintech MSc](#)

Business and Management

[Business Intelligence and Analytics MSc](#)
[Management MSc](#)
[Management with Communication MSc](#)
[Management with Entrepreneurship MSc](#)
[Management with Human Resource Management MSc](#)
[Management with International Business MSc](#)
[Management with Leadership MSc](#)
[Management with Marketing MSc](#)
[Management with Tourism and Hospitality MSc](#)

International Business

[International Business with Entrepreneurship MSc](#)
[International Business with Humanitarian Challenges MSc](#)
[International Business with Marketing MSc](#)
[International Business with Project Management MSc](#)
[International Business with Tourism and Hospitality MSc](#)

Logistics and Operations

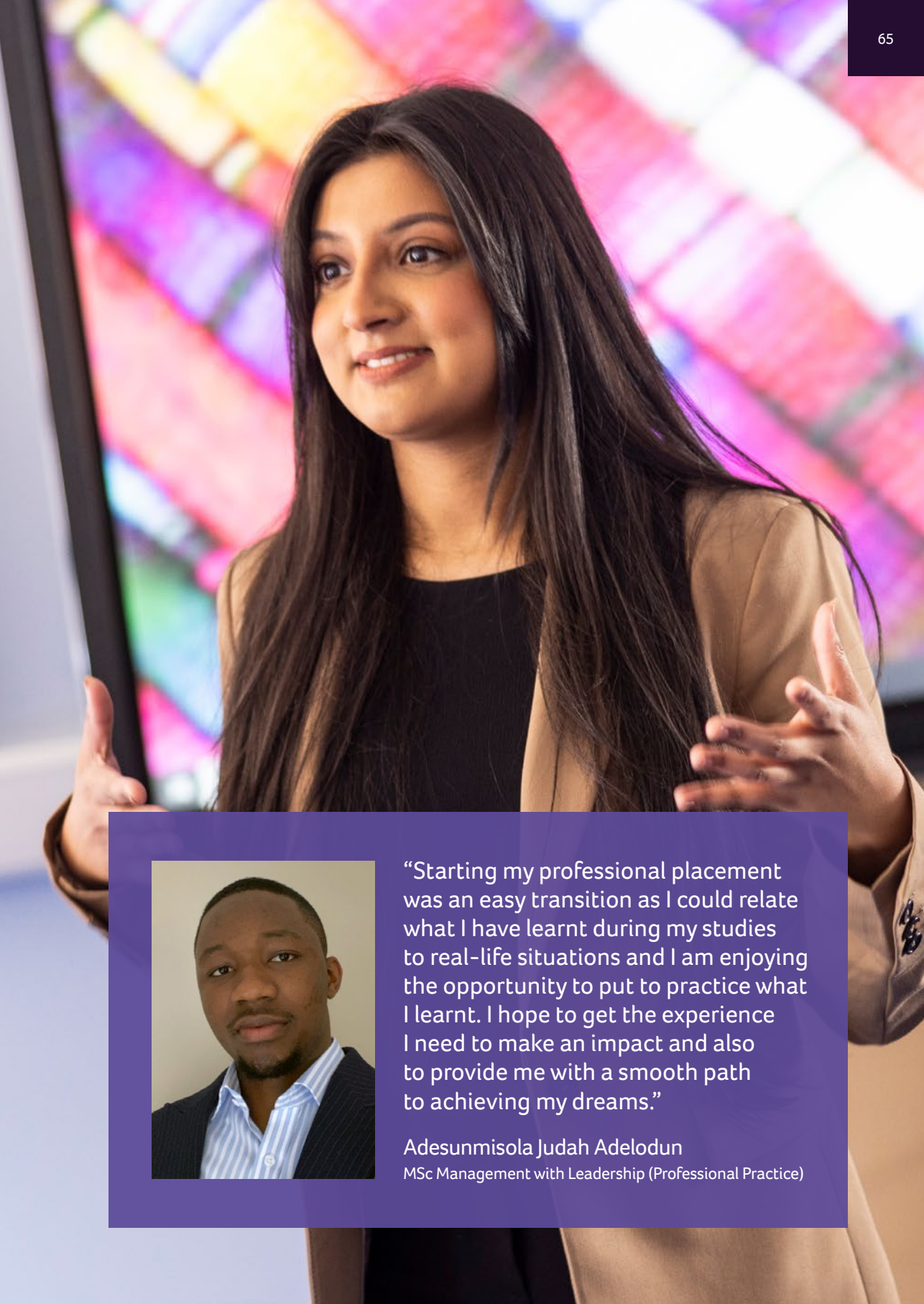
[Business Intelligence and Analytics MSc](#)
[Logistics and Supply Chain Management MSc](#)
[Project Management and Operations Management MSc](#)
[Supply Chain Management with Humanitarian Challenges MSc](#)
[Sustainable Supply Chain Management MSc](#)

Marketing

[Digital Marketing MSc](#)
[Marketing MSc](#)
[Marketing with Brand Management MSc](#)

Strategic Communication and Leadership

[Leadership, Communication and Humanitarian Challenges MSc](#)
[Strategic Communication and Leadership MSc](#)
[Strategic Communication, Leadership and Sustainability MSc](#)
[Sustainable Business Leadership MSc](#)



“Starting my professional placement was an easy transition as I could relate what I have learnt during my studies to real-life situations and I am enjoying the opportunity to put to practice what I learnt. I hope to get the experience I need to make an impact and also to provide me with a smooth path to achieving my dreams.”

Adesunmisola Judah Adelodun

MSc Management with Leadership (Professional Practice)



Get in touch

We hope our Postgraduate and Research Prospectus has answered your questions about studying at the University of Huddersfield. There's lots more information on our website at hud.ac.uk/postgraduate and you can also find out more at one of our Postgraduate Open Days. If you have any further questions, please get in touch.

General enquiries

Tel: +44 (0)1484 422288

Email: askhud@hud.ac.uk

Student Recruitment

Tel: +44 (0)1484 472625

Email: study@hud.ac.uk

Connect with us

 [Huddersfielduniversity](https://www.facebook.com/Huddersfielduniversity)

 [huddersfielduni](https://www.instagram.com/huddersfielduni)

 [huddersfielduni](https://twitter.com/huddersfielduni)

 [University of Huddersfield](https://www.linkedin.com/company/University of Huddersfield)

Postgraduate Open Days

Wednesday
20 November
2024

Wednesday
12 March
2025

Wednesday
04 June
2025



Book now



University of HUDDERSFIELD

Inspiring global professionals

University of Huddersfield

Queensgate
Huddersfield
HD1 3DH
United Kingdom

Tel: +44 (0)1484 422288

Email: askhud@hud.ac.uk

www.hud.ac.uk



This prospectus was prepared in the summer of 2024 for courses starting in September 2025 and January 2026 and is up to date as at the date of publication. Any subsequent changes to information will be published in the course information listings on our website courses.hud.ac.uk and you should **check our website** for the latest information before you apply.



View legal
information

